

Stage 220P

12-inch (300mm) 500W Powered Subwoofer

JBL



Product Overview

Designed and engineered in our world-famous Acoustic Engineering Center of Excellence in Northridge, California, Stage 220P is 500W and is the most powerful subwoofer in the Stage series. This subwoofer features a high excursion 12-inch (300mm) Polycellulose low-frequency woofer with dual rear firing tuned ports that provides deep, powerful, signature JBL bass. A full complement of controls provides for easy system integration.

Available in Espresso or Latte woodgrain finish with solid color front baffles and matching grilles.

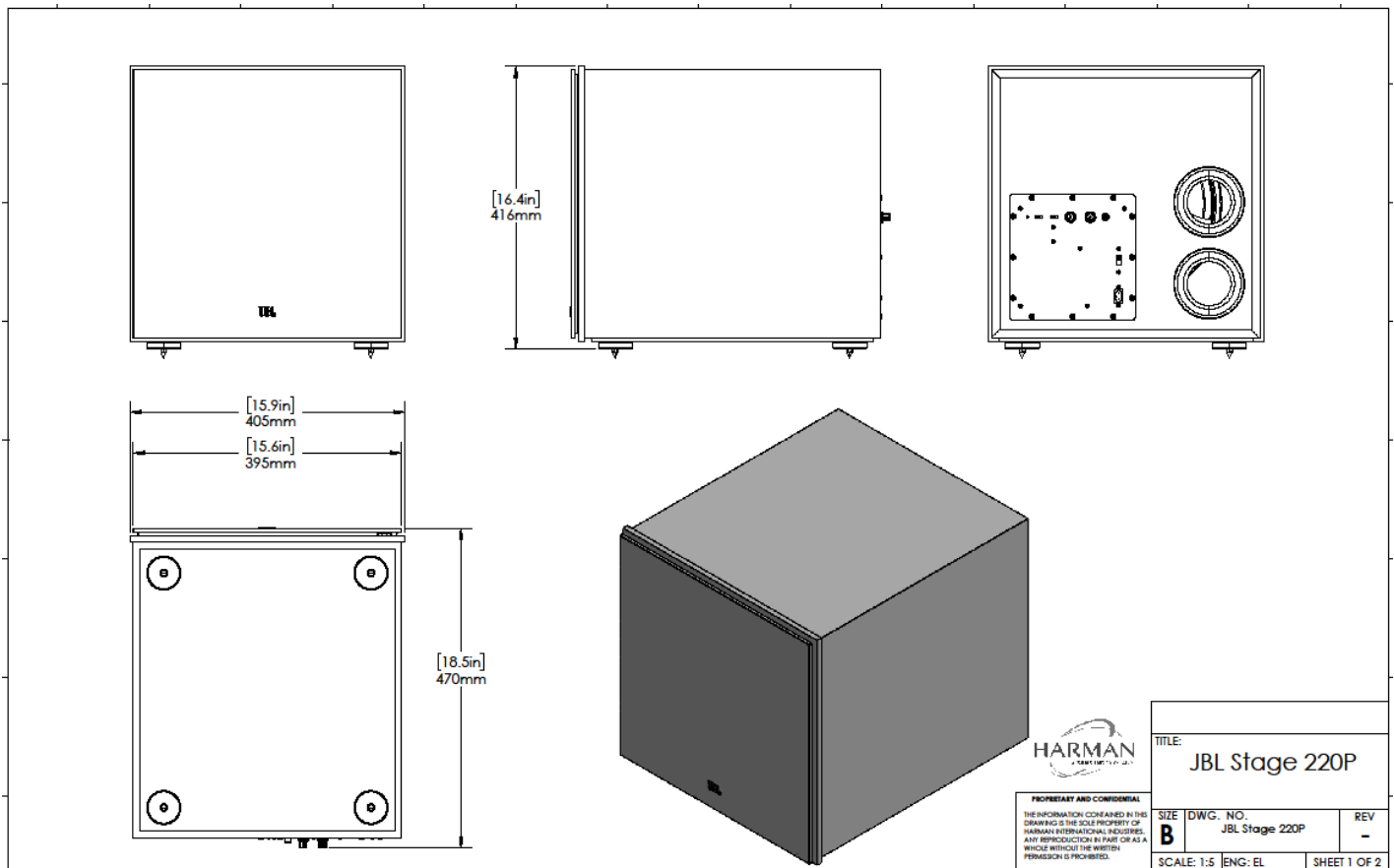
Highlights

- 12-inch (300mm) Polycellulose Ribbed Cone Low-Frequency Woofer
- 250W RMS (500W Dynamic)
- Dual Rear-Firing Tuned Ports
- Crossover, Level and Phase Control

Specifications

| | |
|-------------------------------|--|
| Type: | Powered Subwoofer |
| Low Frequency Driver: | 12-inch (300mm) Polycellulose Ribbed High Excursion |
| Amplifier Power: | 250W RMS (500W Dynamic) |
| Frequency Response \pm 6dB: | 26Hz-150Hz |
| Crossover Frequencies: | 50Hz-150Hz (variable) 24dB/octave |
| Controls: | 35Hz-150Hz |
| Controls: | Auto Power, Crossover, Level, Phase |
| Inputs: | One (1) Line-Level LFE Input |
| Enclosure Tuning: | Bass-Reflex via Dual Rear-Firing Tuned Ports |
| Power Requirements: | 120V, 60Hz (US) 220-230V, 50/60Hz (EU) |
| Power Consumption: | <0.5W (standby) / 205W/1.6A (max – 230V) / 205W/3.15A (max – 120V) |
| Finish: | Espresso or Latte |
| Dimensions (HxWxD): | 16.4in x 15.9in x 17.5in (416mm x 405mm x 444mm) |
| Product Weight: | 41.2 lbs. (18.7 kg) |
| Shipping Weight: | 51.4 lbs. (23.3kg) |

Dimensions



HARMAN
SOUND BY JBL

THE INFORMATION CONTAINED IN THIS DRAWING IS THE SOLE PROPERTY OF HARMAN INTERNATIONAL, INCLUDING ANY REPRODUCTION IN PART OR AS A WHOLE WITHOUT THE WRITTEN PERMISSION IS PROHIBITED.

| | | |
|---------------------------------|----------------------------|--------------|
| TITLE: JBL Stage 220P | | |
| SIZE B | DWG. NO. JBL Stage 220P | REV - |
| SCALE: 1:5 | ENG: EL | SHEET 1 OF 2 |